

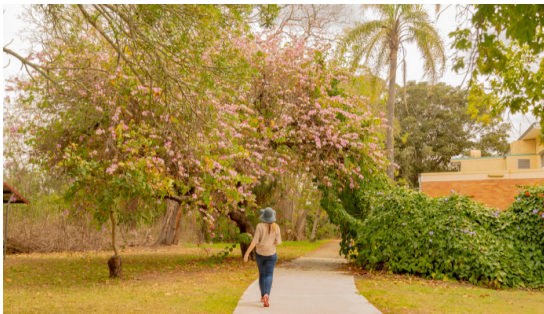
Welcome

'Explore the beauty and secrets of the art deco, pre and federation heritage buildings in Casino.'

Casino's settlement buildings in the business district and suburban areas are home to many wonderful examples of federation and art deco style, making the walk a pleasure for those who appreciate history and architecture.

From grand pubs and government offices to banks and schools and houses with classic wrap-around verandas to catch river breezes. These lovingly restored buildings in the older precincts of Casino tell tales of the way life used to be in the town; a life where locals fought fire, flood, war, and economic hardship to etche out a living in a thriving township, which today, has become a major service centre for the area where locals enjoy a real sense of place with an enviable quality of lifestyle.

Enjoy your stroll back in time!



Richmond
Valley
Council



Discover
**RICHMOND
VALLEY**

CONTACT US:

p: 6660 0325

e: tourism@richmondvalley.nsw.gov.au

w: www.discoverrichmondvalley.com.au

Discover
CASINO

FEDERATION HERITAGE SCENIC WALK CASINO

DISTANCE: Approx 2km

TIME: Approx 1.5 hours



Scenic Walk

Start: Casino Visitor Information Centre, 84a Centre Street.

Leaving the Visitor Centre, head north to the Irving Bridge and turn left into Memorial Park.

- 1 The Cairn - A short stroll through the park behind the pool complex brings you to a memorial cairn marking the original crossing point of the Richmond River, colloquially named the 'Crossing Place'. Clay & Stapleton made the first settlers' river crossing, discovering the area in 1840 and laying claim to 30,000 acres of land they named "Cassino". A government gazette in 1855 proclaimed the town to be 'Casino'; the township's spelling known today.



Leaving the Cairn, walk directly up West Street until you reach the Anglican Church.

- 2 The Anglican Church - Built in 1904 on land which was donated by Henry Barnes, then owner of the iconic 'Dyraaba Station', who also owned a town house built just three doors down from the church which still stands today.



Turn right and continue down Barker Street to the roundabout.

- 3 The Hotel Cecil - Formally known as the Imperial Hotel, the building was moved to this position in two pieces, by bullock teams, from the corner of Walker and North Streets in 1918, reopening a year later as The Hotel Cecil.



Cross, Keep & Wilkinson Accountants - The building opposite The Hotel Cecil was erected in the 1930's as the office and printery of the Richmond River Express, then Casino's local newspaper.

Liberty Service Station - An art deco building erected for Jack Hassell in 1936 and traded as Hassell's Garage. This has been the site of a garage and/or service station now for 72 years.

Turn left and continue north along Centre Street.

- 4 Mulherin & Shier Building - Built for Dr Louis Jabour, the Mayor of Casino during the 1930s. Next, the Ambulance Station, built in 1938. The very first ambulance service in Casino started in the 1880's using a stretcher to transport patients. In 1919 a public subscription was launched to raise funds for a motorised ambulance.



Continue along Centre Street until you reach St Mary's Catholic Church.

- 5 St Mary's Catholic Church - Opened in May 1940 and constructed using local bricks made at Coombell (south of Casino) with an art deco interior. This building replaced the first Catholic church erected on this site in 1876 by Abbe Schurr, the first resident priest in Casino.



Cross Centre Street and continue right down Canterbury Street.

The Civic Hall - An art deco building that was designed by architects Gilbert & Ashe in 1937. The Hall is still used today for public concerts, ceremonies and functions. Public toilets are located within this building.

- 6 Oatens Casino - The building (opposite the Hall) was originally a department store established in the 1890's and traded as Glynn's Department Store until it closed its Casino operation in the 1950's.



Continue along Canterbury Street to Walker Street.

The Royal Hotel - Established on this site in 1887, rebuilt in 1912 and then demolished and rebuilt in 1967.

- 8 Walker Street Cafe and Bar - (opposite the Royal Hotel) First established in 1901, the original hotel was demolished and replaced by the present building in the 1960's. Walker Street Cafe and Bar is a modern day cafe by day and bar by night, established in 2020.

Turn right onto Walker Street, one of Casino's main CBD streets.

- 10 Network Video - Originally the store of A.B. Fossey who came to Casino in 1924. Fossey's traded in this premises until taken over by Coles.

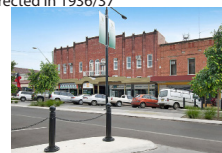
- 11 Kibbles Bakery - (pictured) has been the site of a bakery since 1880 when Peter Thomas opened the first bakery. the inside cafe or alfresco dining areas make for a refreshing break in your walk for a cool drink, delicious coffee or snack.



The ANZ Bank - The present building opened in 1911 as the Union Bank until the ANZ Bank was formed.

- 12 The Civic Centre - The Civic Centre buildings were erected in 1936/37

- 13 behind the existing Chambers and Town Hall, with shops to the front and an arcade providing access to the street. The Casino Council held its first meeting in the Committee Room of the new building on 13 July 1937. The first meeting held in the Chamber was on 9 August 1937. The Civic buildings were opened by the State Premier, B.S.B Stevens on 20 November 1937. The amalgamation of Casino Council and Richmond River Shire Council saw the relocation of Council Chambers and its administrative centre to its present location (corner of Walker Street and Graham Place). The premises was then sold to private investors.



- 14 Casino Centre - Opposite the Civic buildings, Casino Centre was built in 1912 for William & Robert Heathwood who came from Brisbane in 1904. This business, known as Heathwoods Ltd, became the largest general store on the Far North Coast.

Williams Pharmacy - Occupies part of the building built for Mr. Alex Smith in 1937 after the previous building was destroyed by fire. The original premises extended around each corner of Barker and Walker Streets housing Smith's Department Store, which ceased trading in 1967 and then transformed into smaller stores.

- 15 Westpac Bank - The Bank of NSW was opened in Casino in 1889 operating from an office in the Town Hall. The present bank building was erected in 1905.



- 17 School of Arts - The present building was completed in 1934 at a cost of £12,800 and was the third School of Arts in Casino. Now it presents as retail outlets on ground level with the School of Arts Library and Family History Group upstairs.



- 18 Commercial Hotel - The hotel was erected on this site for James Britton in 1869. By the 1900's it has been transformed from a cottage to a magnificent two storey building. A tour of the internal premises is a must. The hotel was the operations site of the first Beef Week in 1982, where legend has it one of the cattle was led in to the building and his foot went through the floor.



Turn right into Barker Street.

- 19 Casino Post Office - The original post office was built on this site in 1879. In 1889 additions were made and again in 1916 further alterations included a second storey which was used as the Postmaster's residence. This building was Heritage Listed in 2000.



- 20 Casino Court - The premises is occupied by Zeebra's Cafe and Restaurant, a popular eatery, and the former offices of the local newspaper, The Richmond River Express Examiner, along with other commercial offices. Established in 1869 it was originally the Commercial Bank.



- 21 Kwong Sings Arcade - In 1929, Frank Fatt moved to Casino. He purchased a small fruit shop and developed it into a department store. The business Kwong Sings & Co. moved to its current location in 1948. The business is still owned and operated by the Fatt family.

Cross the street and retrace your steps.

- 22 Savins First National Real Estate - The premises was formally the Rural Bank, built around 1933.
- 23 El Gronda Arcade - The El Gronda Picture Theatre was opened on Australia Day 1937. The theatre closed in 1969 due to the advent of television and drive-in theatres. The original theatre entry (now the arcade) was an impressive tree-lined walkway with statues, massive urns and a fountain.

Turn right and continue along Walker Street.

- 24 Parkview Funeral Home - In 1946, Mr Martin Arentz built two art deco style buildings for a new car showroom and mechanical workshop.
- 25 Casino Community and Cultural Centre - This centre was built in art deco style reflecting the theme of architecture throughout Casino and yet remaining contemporary. The centre was built in 2011 and designed by Lismore-based architect, James Lyon.



Turn right along Richmond Street to end your walk back at the Casino Visitor Information Centre.

Throughout this part of Casino, many of the homes were built in the Federation era and still retain their country charm of yesteryear.

NOTE: Map available on back of brochure