

Rappville

(1) Phoenix

Artist Austin Nitsua | Rappville Public School | 2019

The phoenix which resides on the main wall of the Rappville Public School can be seen from Lyons Street. After the bushfires, Rappville residents wanted something that would hold meaning and inspire the school students and the community. The phoenix represents Rappville rising above the ashes.



(2) Where the Bush Meets the Sea

Artist Austin Nitsua | Rappville Public School | 2019

Students at the school created the design concept for this mural to reflect Rappville as a town where the bush travels to meet the sea. The students wanted the mural to represent the path animals and the natural watercourse take to the ocean. Students picked which animals they wanted to be depicted in the mural and Austin was able to bring them to life.

(3) Rural Fire Service Mural

Artist Austin Nitsua | Rappville Public School | 2019

This design is situated on the water tank at the Rappville Public School. The tank is designated for fire emergencies. The school has a strong connection with the Rural Fire Service, many of the staff and community members are RFS volunteers. The mural holds a powerful message, paying tribute to the devastation as well as the strong community spirit following the 2019 bushfires.



(4) Historical Water Tank

Artist Austin Nitsua | Rappville Public School | 2019

This water tank is located between the two buildings at Rappville Public School creating a heritage feel. The illustrations were created by a community member who designed drawings and ideas to create the concept. Community member Keith Cole shared photos of buildings in Rappville from the early establishment of the village. Transton's General Store, originally where the Post Office is located, and an early image of the Rappville Commercial Hotel were chosen to be depicted on the tank.

(5) Rappville Station

Artist Austin Nitsua | Australian Rail Track Corporation | 2020

This mural was kindly donated by Austin Nitsua after he heard about the devastating bushfires the region had suffered in 2019. The ARTC requested the design reflect the history of the railway. The steam engine and the number painted on the mural holds great significance to Rappville, as both are the same as the original steam engine which would pass through the village and stop to be loaded with a haul of pine trees. Community members and Richmond Valley Council Mayor Robert Mustow prepared the surface for painting.

Map



Discover
RICHMOND VALLEY
explore next door

► RICHMOND VALLEY ART TRAIL

Casino and Rappville

Richmond
Valley
Council



CONTACT US:

p: 6660 0325

e: tourism@richmondvalley.nsw.gov.au

w: www.discoverrichmondvalley.com.au



Casino

(1) Bicentennial Casino History

Artist Lea Blacker | Casino Community Centre | 1988

The Bicentennial mural is the largest and oldest mural in the Richmond Valley. The mural depicts agricultural scenes from days of 'yore', with families depicted coming into town in a buggy dressed in their Sunday best. There are eight inset scenes on the lower part of the mural depicting Bonalbo Station, Dyraaba Station, Durham Ox Inn, Aunt Betty's Corner Store, Wooroowoolgen Station, Tomki Stables, timber cutters and Irvington Wharf. Some of the mural is painted in Aboriginal dot painting. The dots were painted by community members who paid a dollar to add to the rainbow serpent.

(2) Retail Revitalisation Project

Artist Harry Armstrong | Walker Street | 2017

The scene is a landscape depicting our town's natural asset - the Richmond River. This artwork was created through Future Towns, a NSW Government program. The idea was to bring a splash of creativity and colour to an unused building. The mural is close to the Casino Public School and the local children delighted in seeing the mural come to life as they walked past.

(3) Tattersals Hotel Bull Mural

Artist Harry Armstrong | Tattersals Hotel | 2016

If you weren't sure ... Casino stakes its claim as the Beef Capital of Australia! To reflect this community sentiment, the owners of the Tattersals Hotel commissioned a local artist to paint a Hereford cow on the wall of the building for all to see.

(4) TAFE Aboriginal Mural

Artist Noel Caldwell | Casino TAFE | 2014

Noel, also known as Charlie, lives and paints in Casino. Charlie has been painting since he was 15 and draws his inspiration from his Aboriginal heritage. His paintings often depict ceremonies and the traditional Bundjalung way of life. Charlie's work reflect his flair for colour and design, and combines traditional dot painting techniques with a more contemporary illustrative style.



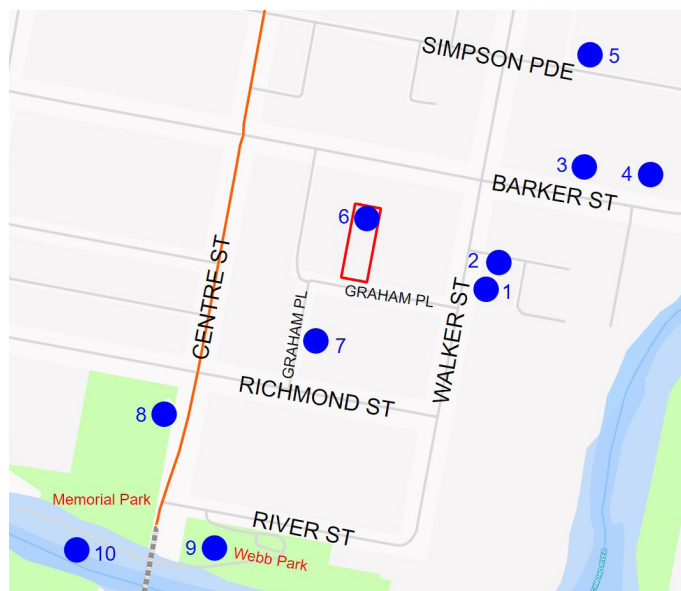
(5) The Laneway Project

Artists Brett Priva & Tom Henderson | Simpson Parade | 2019

This modern mural reflects the history and importance of the Simpson brothers using the Art Deco architecture. Casino is known for. The colour and lines of the painting reflect the Art Deco period, and font styles were used to mimic the original writing on the business. Rimmingtons is a feature of the design as a nod to the past. The signature on the painting is an original signature from the agreement of initiation from Northern Co-operative Meat Company, which is now the largest employer in Casino.



Map



(6) El Gronda Mural

Artist Deb Lees | El Gronda Carpark | 2018

Representing the important history of the El Gronda Theatre, this mural depicts a cafe scene with a theatre feel, incorporating fashion trends and decor from 1937 through to the 1960s, when the theatre was closed. The mural includes a mix of European themes in recognition of the cafe and theatre culture Greek families brought alive in Casino.

(7) For the Love of Words

Artist Ty & Trish Heaven | Casino Library | 2016

The mural depicts shelves full of titles including popular children's books. The people depicted in the painting represent the diversity of people who use the Library and its services.

(8) Into the Blue

Artist Ty Heaven | Casino Memorial Pool | 2015

The mural ties the water of the pool and the significance of the water running next to it in the Richmond River. The mural features a platypus, which is significant to the local Aboriginal people.

(9) Camp Site by the River

Patsy Nagus | Webb Park | 2000

This mural was created with the help of Aboriginal youth undertaking a Get Skilled course at Casino TAFE. The theme of the mural is a contemporary art project which features the river and fauna. Recognised Aboriginal artist Patsy Nagus, from Kyogle, was engaged to complete the project.

(10) Platypus Sculpture

Artist Mick Thorman | Irving Bridge | 1994

If you are walking across the Irving Bridge and look down to the river below you will see two platypuses carved into the rocks on the bed of the river. These carvings indicate the real presence of the platypus in the Richmond River. Platypuses are also symbolic for local Aboriginal people and are a totem of the local Aboriginal tribe.

