



The Pump Shed Bay

The pump shed is the original building, just as it was built in 1900. It is labeled Pump House and Workshop on many of the early site plans.

The shed was the hub of activity. It was the workshop and the tools and equipment store.

The shed contains two steam-driven centrifugal pumps built by Milne Bros in Sydney, installed in 1900. These were two of only five ever built. The others have long been lost. The pumps were used to empty the dock.

The Byron Bay Jetty Passenger Shed

This shed was formerly located at the Byron Bay jetty, where it was the passenger waiting room. People who waited in this shed for their ship trips up and down the coast.

Battered by storms in the 1940s and 50s, the jetty was abandoned and dismantled by the 1970s. The passenger shed was no longer needed and, as was common with public works buildings, it was moved to where it was needed. So it found itself at the bustling public dry dock at Rileys Hill. For many years it served as the Manager's office.



Rileys Hill Historic Dry Dock Reserve

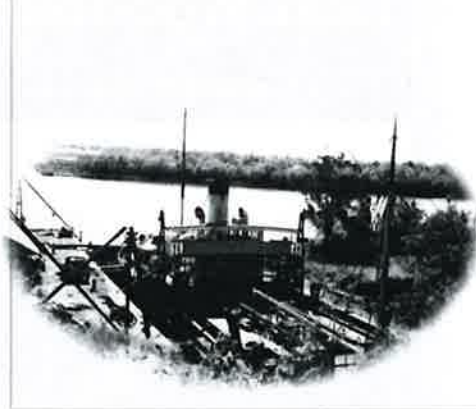
Rileys Hill Richmond River near Woodburn



Rileys Hill Dry Dock is one of three historic dry docks in the Northern Rivers region. It was built by the Public Works Department to fulfill the River and Harbour Works Act, and was opened in 1900.

The Dry Dock was a vital part of the busy river industry, and an important facility and a keystone for the economy and people of the entire Richmond valley. The river was the freight highway of the early 20th century. Imagine all the goods now transported along the Pacific Highway being carried in ships along the Richmond River.

The dry dock was used to maintain and repair the hulls of the ships, ferries and boats that



worked the Richmond River for much of the 20th century. One of the last ships to be serviced was the Ballina-based SS South Steyne, now a floating restaurant in Darling Harbour in Sydney, before the dry dock closed in 1991.

As you walk along the riverbank to the dry dock, you will see the remains of this important industrial site. The dock and its gates tell a story of the river bursting with shipping. The old pump shed testifies to early technology, and the sheds link the dry dock to the rest of the north coast.

Stroll along the tranquil Richmond River bank, and admire the quarry that supplied rock for the river mouth wall at Ballina. Imagine a bustling industrial site, the steam-driven cranes, and the sounds of shipwrights plying their trade.

You are welcome to visit the Dry Dock

Turn off the Pacific Hwy at Broadwater, follow signs to Rileys Hill, and drive through the village of Rileys Hill. Follow signs for the Dry Dock.

A self-guided tour follows the interpretive signs.

Groups are welcome. Contact Bruce Grant on bruce.grant4@bigpond.com or (02) 66 828 418.

PROPOSED DOCK AT RILEY'S HILL
RICHMOND RIVER
PARISH OF RILEY. COUNTY OF RICHMOND

Rileys Hill Historic Dry Dock is managed by the Rileys Hill Dry Dock Heritage Trust on behalf of the NSW Government (Reserve no. 1004288). For further information, phone (02) 66 403400.

The photos are from the Coraki Historical Society and the Cape Byron Lighthouse Museum collections.